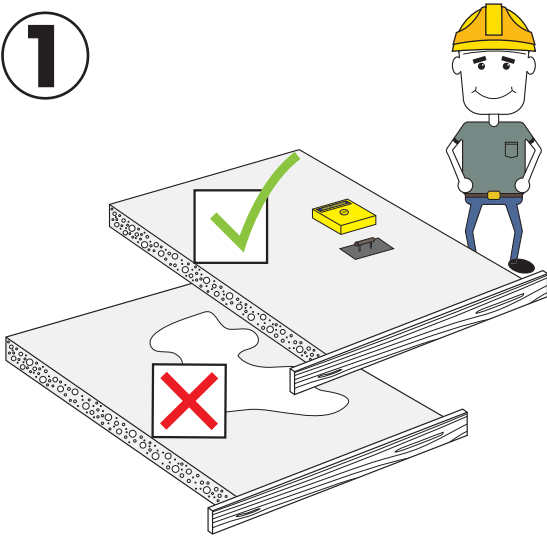


ACCLIMATISATION & STORAGE GUIDELINES

1



Ensure all wet trades are finished and dry (e.g. concreting, plastering). The room should be weather tight and thoroughly dried out.

A rough guide to new screed drying times

Thickness of screed/ concrete	Estimated drying time
1mm	1 Day
10mm	10 Days
60mm	60 Days
75mm	75 Days
100mm	125 Days
Over 100mm	Considerably Longer

This is only a rough guide and all screed or concrete should be checked with suitable hygrometer (Moisture Meter).

2

The relative humidity must be in the range 45-65%, with ambient temperature in the range of 17 to 22°C.

Room Humidity Gauge



Make sure your subfloor is completely dry by testing it with the correct equipment.

- The Bamboo Flooring Company always recommend following the British Standards when testing screeds, concrete bases and wooden subfloors.
- For concrete or screed, use a digital hygrometer or a concrete moisture meter (e.g. Tramex).
- Remove Laitance from Anhydrite/ Calcium Sulphate Screeds either by sanding or grinding.
- For a wooden subfloor use a two pronged/spiked moisture meter.
- Check the readings against the manufacturers instructions to ensure that your subfloor is dry enough to store and acclimatise your bamboo floor. If the moisture levels are too high store in a dry room. Allow more time for your subfloor to dry sufficiently before putting in the room.
- If under floor heating is present please make sure this has been commissioned and ran for at least 10 days, then turned off for at least 3 days before testing the area.

Digital Hydrometer



CONCRETE ONLY

< 65% RH

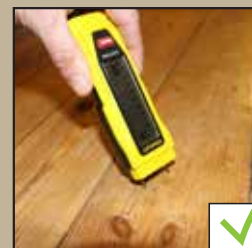
Concrete Meter



CONCRETE ONLY

< 3.5% H₂O
TRAMEX

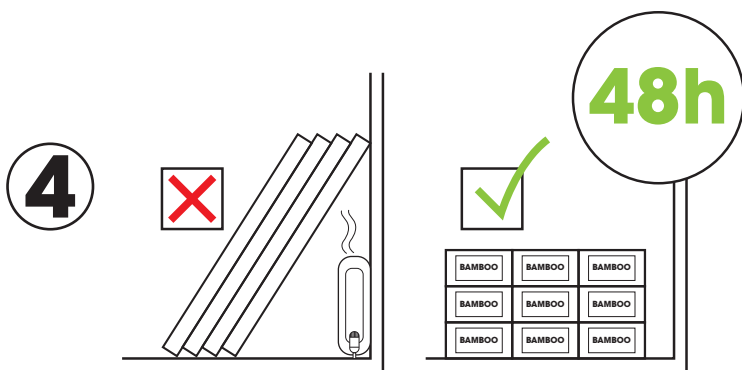
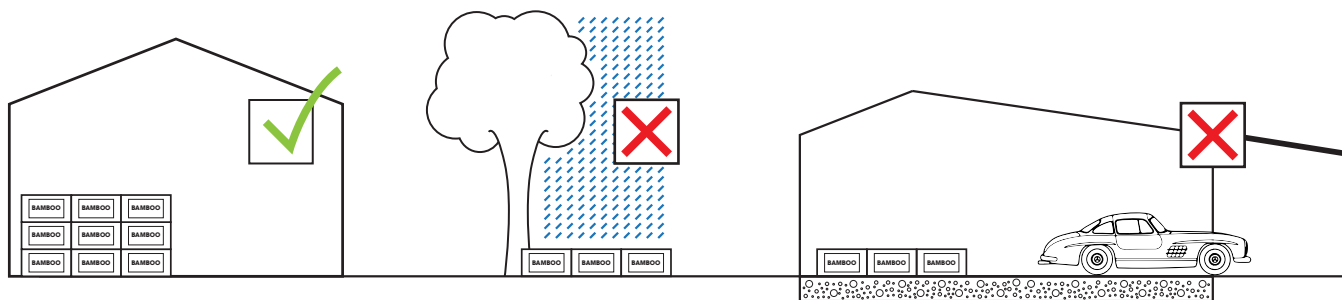
2 Prong Moisture Meter



WOOD ONLY

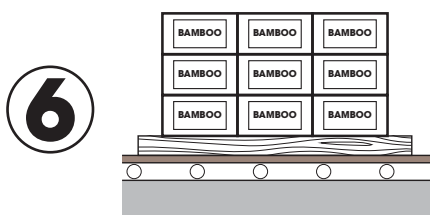
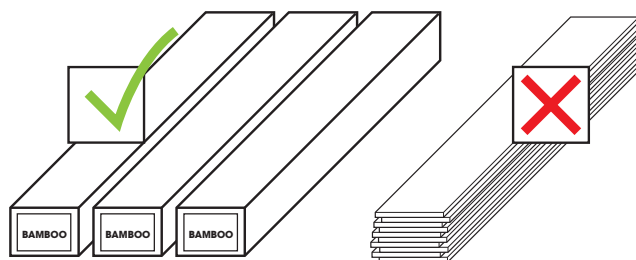
< 15% MC

3 As part of your warranty conditions, the boards should be stored in a warm, dry environment and should never be stored outdoors, in a garage or in any damp conditions.



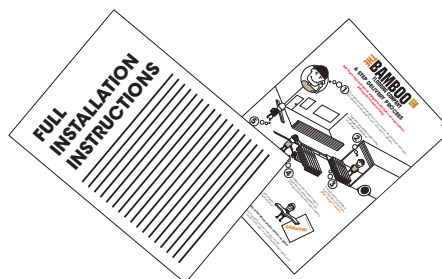
Care should be taken to store the boards flat; these should never be lent against a wall and must be stored away from any heat source. A minimum of 2 days should be allowed for the bamboo flooring to acclimatise to the ambient temperature and humidity.

5 The flooring must be left in the packaging to ensure it is well protected against damage or marking from other building operations until ready to install.



If underfloor heating is present, please ensure the boards are raised off the floor by using blocks of wood. Your bamboo floor should not be stored directly on top of underfloor heating as it needs to all acclimatise at the same rate. By putting your bamboo floor on pallets or batons, the air can flow freely underneath.

7 Please read the installation instructions thoroughly before carrying out your install. These can be found on our website and in the boxes of flooring.



Important this document is intended as a guideline and you should always read and comply to the manufacturer's instructions when testing moisture and humidity levels